



ONE CURZON

M A Y F A I R

8,404 SQ FT
OFFICE SPACE TO LET

MAYFAIR PRESTIGE

RIGHT
ENTRANCE
& RECEPTION



ABOVE
FAÇADE ONTO
CURZON STREET



- PRIME MAYFAIR LOCATION
- PARTIALLY FITTED OFFICE SPACE
- REFURBISHED RECEPTION
- STATE-OF-THE-ART END OF TRIP FACILITIES

One of Mayfair's most prestigious office buildings, One Curzon is situated just off Berkeley Square and is home to a number of high profile financial occupiers.

Beyond the recently refurbished reception, common areas and end of trip facilities, the part first floor is currently available offering 8,404 sq ft of high-quality, light-filled and fitted office space.



ABOVE
RECEPTION

SUMMARY SPECIFICATION

- EXISTING HIGH-END PARTIALLY FITTED SPACE
- WIRED SCORE GOLD
- FOUR-PIPE FAN COIL AIR CONDITIONING
- 2.75M FLOOR TO CEILING HEIGHT
- 150MM RAISED FLOOR
- END OF TRIP FACILITIES DESIGNED BY FIVE AT HEART
- 135 CYCLE SPACES/87 LOCKERS
- 24 HOUR ACCESS AND SECURITY

SPECIFICATION

AN EYE ON DETAIL

A collaboration between architects Morrow + Lorraine and interior designer Jo White has transformed the reception and common spaces. Whilst, the state-of-the-art end-of-trip facilities have been designed by Five at Heart and a premium onsite gym is managed by ThirdSpace.

The fitted first floor is ready for immediate occupation and includes ample meeting rooms, collaborative breakout areas and kitchenette.



ABOVE
WELCOME LOUNGE

THE SPACE

ELEVATED SPACE



DESKS
58

E DESKS
59-70

A DESKS
1-17

THE SPACE

FIRST FLOOR

82	12	02
ROOM FOR 82 OPEN PLAN DESKS	PRIVATE OFFICES	QUIET ROOMS
01	01	01
6 PERSON MEETING ROOM	12 PERSON MEETING ROOM	KITCHEN/BREAKOUT

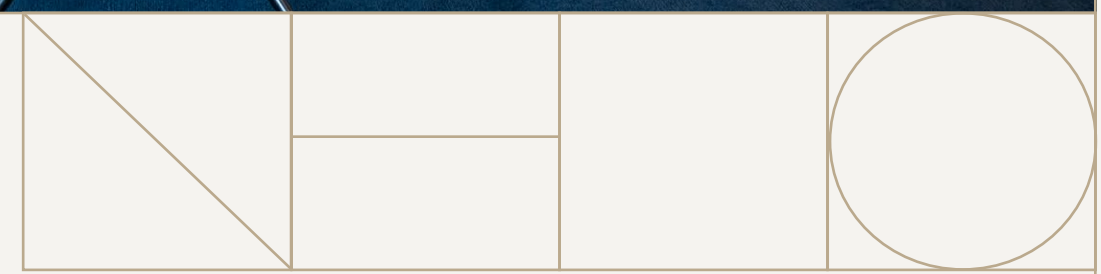


RIGHT
12 PERSON MEETING ROOM

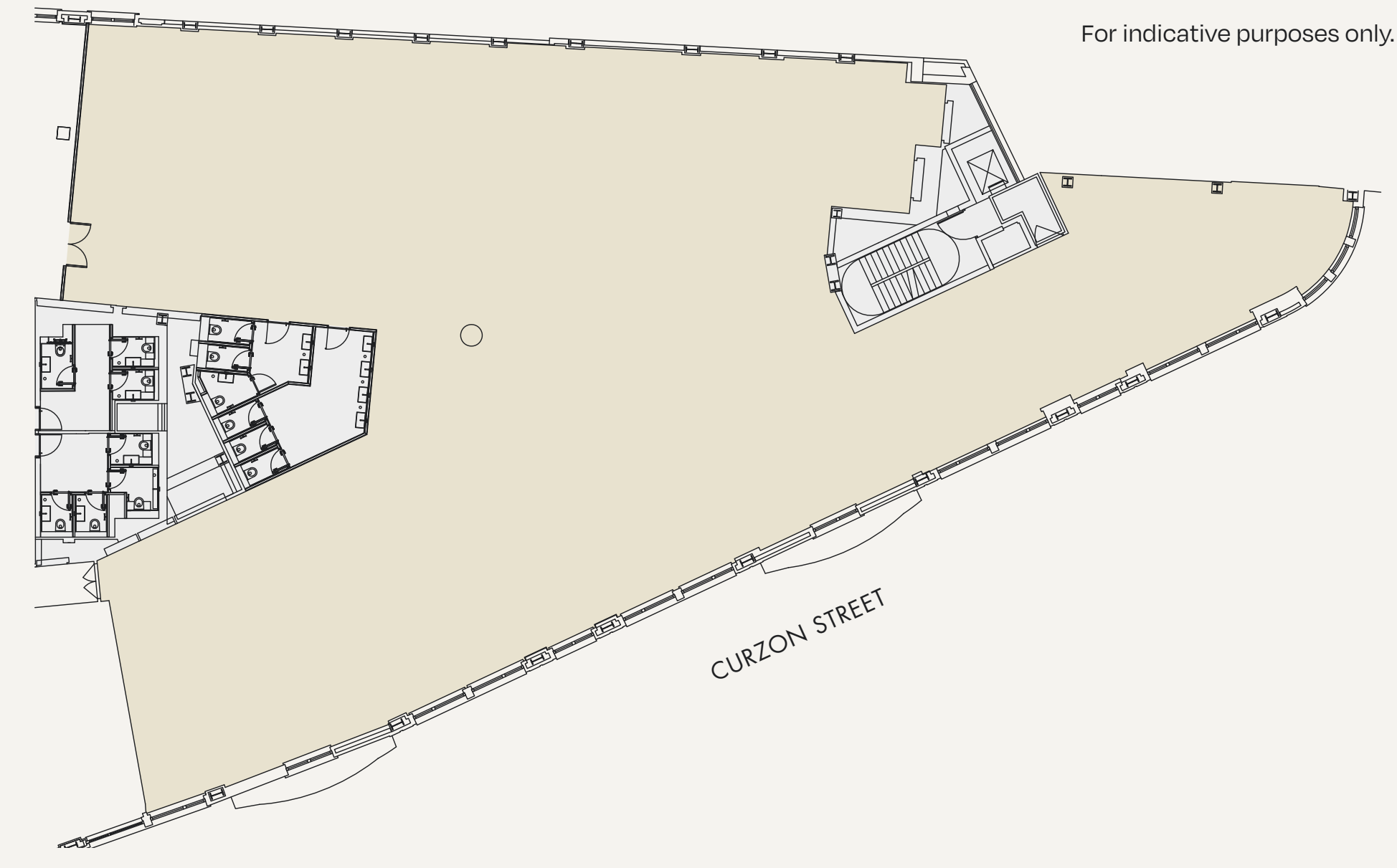


ABOVE
KITCHENETTE / BREAKOUT

8,404 SQ FT (780.76 SQ M)



For indicative purposes only. Not to scale.



THE LOCATION

RENOWNED LUXURY

BELOW
CECCONI'S



- Restaurants**
- 1 Sexy Fish
 - 2 Hide
 - 3 Annabel's
 - 4 Cipriani
 - 5 Cecconi's
- Bars & Pubs**
- 6 The Footman
 - 7 The Rivoli Bar
 - 8 Coach & Horses
 - 9 Dover Yard
 - 10 The Donovan Bar
- Coffee**
- 11 Shot
 - 12 Noxy Brothers
 - 13 Guillam Coffee House
 - 14 Nkora Coffee
- Gyms**
- 15 Third Space
 - 16 Buddhabox
 - 17 E By Equinox
 - 18 The Common Purpose Club
- Hotels**
- 19 The Connaught
 - 20 The Ritz
 - 21 1Hotel
 - 22 The May Fair



ABOVE
BERKELEY
SQUARE

STATION WALK TIMES

From the building. Source:TfL.

<p>GREEN PARK</p> <p>03</p>	<p>HYDE PARK CORNER</p> <p>09</p>	<p>PICCADILLY CIRCUS</p> <p>11</p>	<p>BOND STREET</p> <p>12</p>	<p>OXFORD CIRCUS</p> <p>14</p>
-----------------------------	-----------------------------------	------------------------------------	------------------------------	--------------------------------

One Curzon's position means occupiers have access to an amenity offering befitting London's premier destination. Celebrated restaurants, bars and cafés as well as an unmatched retail and leisure scene featuring London's best Fitness clubs are all within reach.

Mayfair is also connected with both Green Park and Bond Street underground stations just a short walk away.

FURTHER
INFORMATION

GET IN
TOUCH

CONTACTS

James Taylor

07899 843 767

james.taylor@cushwake.com

Gina Stevens

07775 112 999

gina.stevens@cushwake.com



[ONECURZON.CO.UK](https://www.onecurzon.co.uk)

Misrepresentation Act 1967: (i) the particulars are set out as a general outline only for guidance of intending purchasers or lessees and do not constitute, nor constitute part of, an offer or contract (ii) all descriptions, dimensions, references to condition and necessary permission for use and occupation, and other details are given in good faith and are believed to be correct, but any intending purchasers or occupiers should not rely on them as statements or representations of fact, but must satisfy themselves by inspection or otherwise as to the correctness of each of them. January 2025.

Designed & produced by Cre8te - 020 3468 5760 - cre8te.london